

**STANDARD INSTRUMENT
ARRIVAL CHART (STAR) -
ICAO**

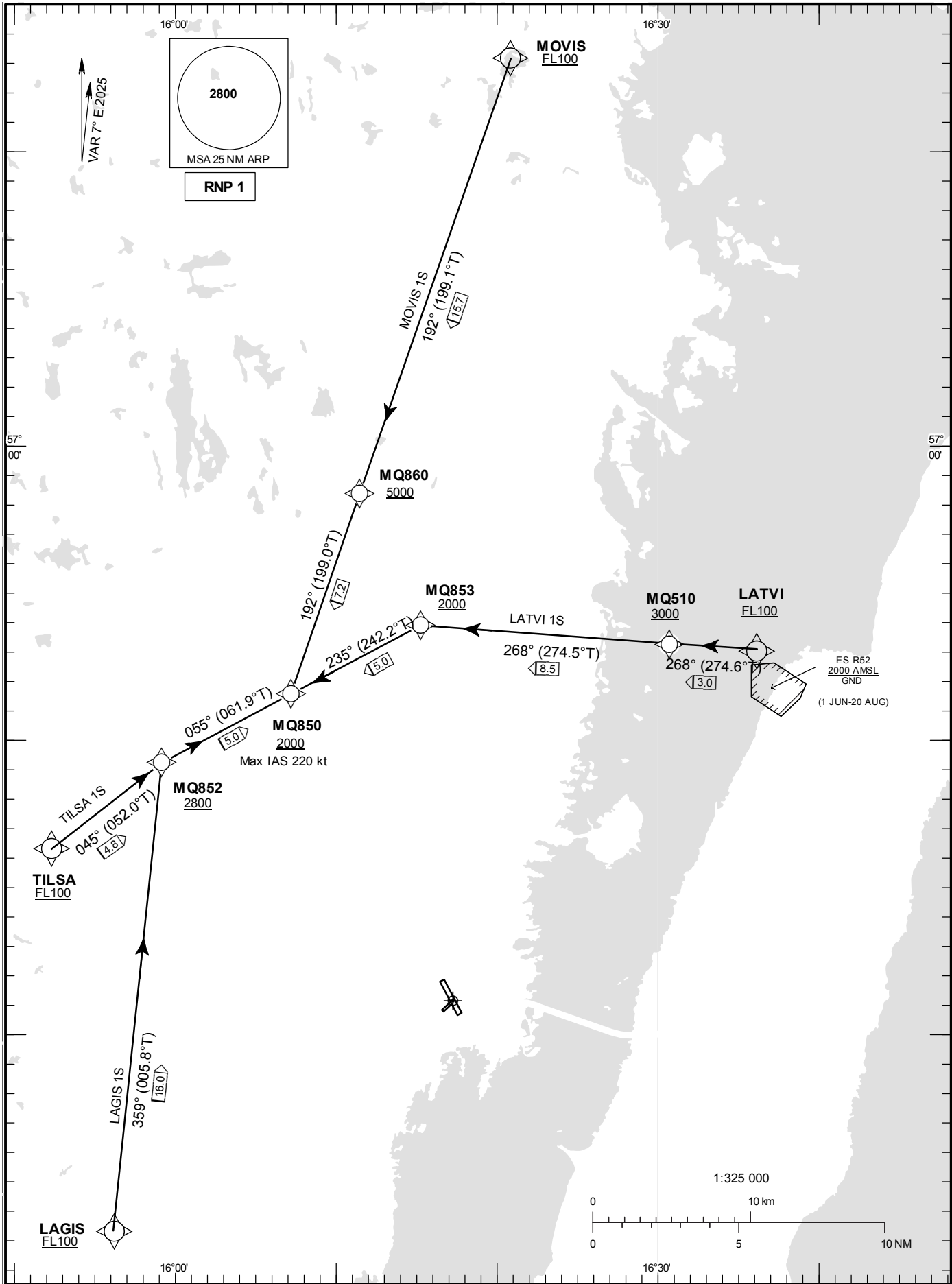
HGT and ALT in ft
BRG are MAG
TA 5000 ft AMSL

KALMAR TOWER 130.805

KALMAR

RNP RWY 16

LAGIS 1S, LATVI 1S, MOVIS 1S,
TILSA 1S.



CHANGE: Editorial

KALMAR**RNP STAR RWY 16 Coding tables and Notes**

1. Operators unable to fly RNP 1 shall inform ATC "UNABLE RNP STAR". Radar vectors or conventional STAR will then be provided.
2. +FL100 altitude restriction at LAGIS, LATVI, MOVIS and TILSA are provided to stay within controlled airspace.
3. STAR LAGIS 1S: If LAGIS is passed at FL100, descent gradient on STAR (to MQ850) is 3.6° (6.3%).
4. STAR LATVI 1S: If LATVI is passed at FL100, descent gradient on STAR (to MQ850) is 4.6° (8.0%).
5. STAR MOVIS 1S: If MOVIS is passed at FL100, descent gradient on STAR (to MQ850) is 3.3° (5.8%).
6. STAR TILSA 1S: If TILSA is passed at FL100, descent gradient on STAR (to MQ850) is 7.7° (13.5%).

LAGIS 1S

Path Desc	Waypoint Identifier	Fly-over	Course °M(°T)	Dist (NM)	Turn Dir	Altitude	Speed	VPA/ RDH	Rec Navaid	Navigation Specification
IF	LAGIS	-	-	-	-	+FL100	-	-	-	RNP 1
TF	MQ852	-	359°(005.8°)	16.0	-	+2800	-	-	-	RNP 1
TF	MQ850	-	055°(061.9°)	5.0	-	+2000	-220	-	-	RNP 1

STAR instruction: LAGIS (FL100 or above) – MQ852 (2800 ft or above) – MQ850 (2000 ft or above, Max IAS 220 kt)

LATVI 1S

Path Desc	Waypoint Identifier	Fly-over	Course °M(°T)	Dist (NM)	Turn Dir	Altitude	Speed	VPA/ RDH	Rec Navaid	Navigation Specification
IF	LATVI	-	-	-	-	+FL100	-	-	-	RNP 1
TF	MQ510	-	268°(274.6°)	3.0	-	+3000	-	-	-	RNP 1
TF	MQ853	-	268°(274.5°)	8.5	-	+2000	-	-	-	RNP 1
TF	MQ850	-	235°(242.2°)	5.0	-	+2000	-220	-	-	RNP 1

STAR instruction: LATVI – MQ510 (3000 ft or above) – MQ853 (2000 ft or above) – MQ850 (2000 ft or above, Max IAS 220 kt)

MOVIS 1S

Path Desc	Waypoint Identifier	Fly-over	Course °M(°T)	Dist (NM)	Turn Dir	Altitude	Speed	VPA/ RDH	Rec Navaid	Navigation Specification
IF	MOVIS	-	-	-	-	+FL100	-	-	-	RNP 1
TF	MQ860	-	192°(199.1°)	15.7	-	+5000	-	-	-	RNP 1
TF	MQ850	-	192°(199.0°)	7.2	-	+2000	-220	-	-	RNP 1

STAR instruction: MOVIS (FL100 or above) – MQ860 (5000 ft or above) – MQ850 (2000 ft or above, Max IAS 220 kt)

TILSA 1S

Path Desc	Waypoint Identifier	Fly-over	Course °M(°T)	Dist (NM)	Turn Dir	Altitude	Speed	VPA/ RDH	Rec Navaid	Navigation Specification
IF	TILSA	-	-	-	-	+FL100	-	-	-	RNP 1
TF	MQ852	-	045°(052.0°)	4.8	-	+2800	-	-	-	RNP 1
TF	MQ850	-	055°(061.9°)	5.0	-	+2000	-220	-	-	RNP 1

STAR instruction: TILSA (FL100 or above) – MQ852 (2800 ft or above) – MQ850 (2000 ft or above, Max IAS 220 kt)